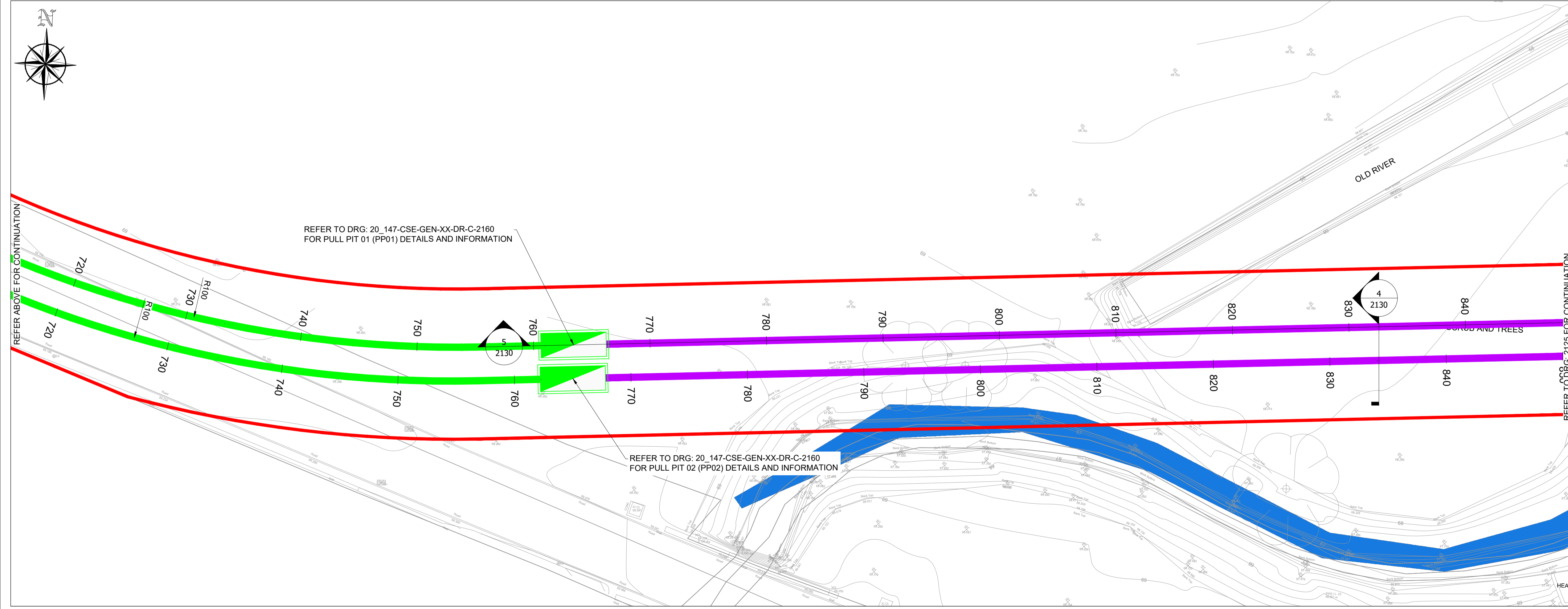
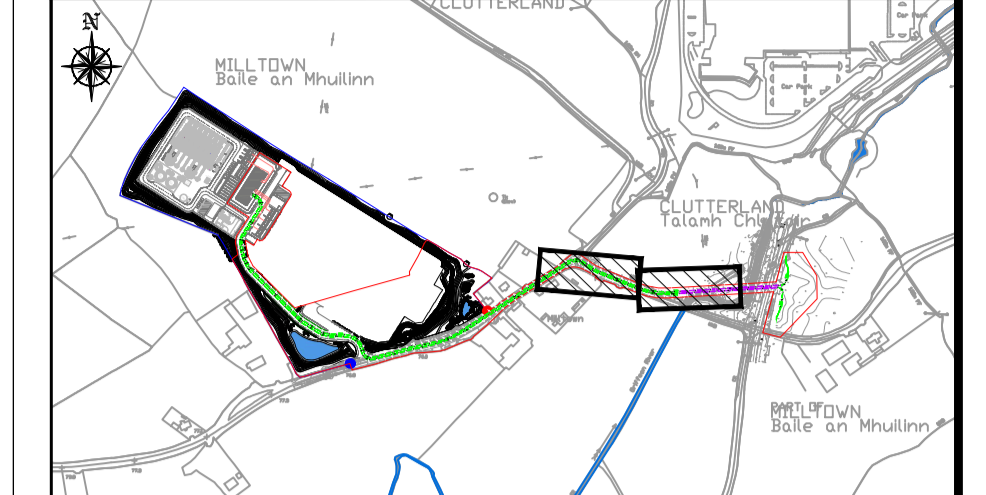


PLAN 6



PLAN 7

DRAWING IS PRODUCED USING THE IRISH TRANSVERSE MERCATOR (ITM) GEOGRAPHIC COORDINATE SYSTEM **A1**



- LEGEND:**
- PLANNING BOUNDARY
 - PROPERTY BOUNDARY
 - PROPOSED 110KV GRID CONNECTION
 - PROPOSED HV CONDUITS
 - PROPOSED HDD (HORIZONTAL DIRECTIONAL DRILL)
 - EXISTING GRIFFEEN RIVER
 - PROPOSED SUBSTATION

| Rev | Description | Drawn | Checked | Date |
|-----|--------------------|-------|---------|----------|
| P04 | ISSUE FOR PLANNING | DW | LP | 15.03.21 |
| P03 | FOR INFORMATION | DW | LP | 10.03.21 |
| P02 | FOR INFORMATION | DW | LP | 23.02.21 |
| P01 | FOR INFORMATION | DW | LP | 17.02.21 |

Clifton Scannell Emerson Associates

Clifton Scannell Emerson Associates Limited
Consulting Engineers,
Seafor Lodge,
Castledawson Avenue,
Blackrock, Co. Dublin,
Ireland, A94 P768
T: +353 1 283 5006
F: +353 1 283 3466
E: info@csea.ie
W: www.csea.ie

DATA & POWER HUB SERVICES LTD
SERVICES DUE DILIGENCE
SITE R120
PROPOSED GRID CONNECTION CABLE ROUTE SHEET 04

Drawn By: DW Date: FEB 2021 **20_147**
Checked By: RG Scale: 1:200 @ A1 CSEA Job No.

Project Code: 20_147 - CSE - GEN - XX - DR - C - 2124

S2 FOR INFORMATION
Status Code: Suitability Description
P04 PLANNING
Revision: Project Status